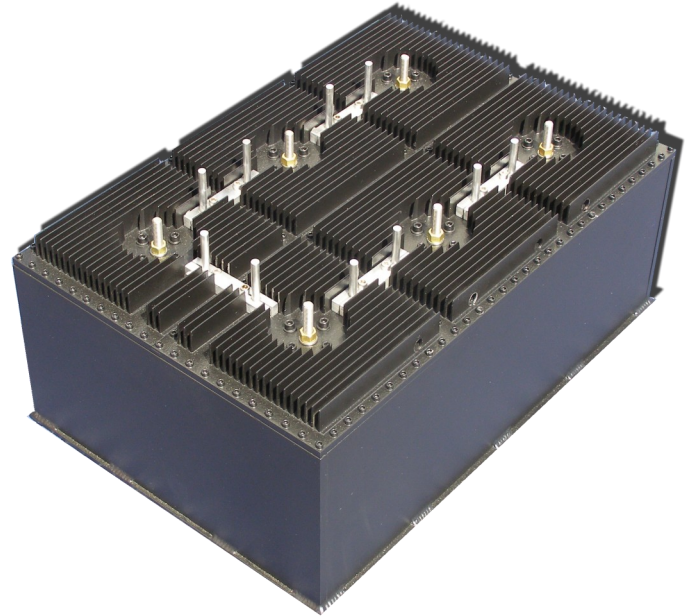




## 5kW Avg, UHF 8"/203.2mm Mask Filter ATSC/DVB-T/ISDB-T

The JAMPRO RCEC 8"/203.2mm UHF Mask Filter with heat sinks is designed to provide superior mask filter performance at an affordable price. Cross coupling creates steep rejection skirts and the high-Q cavities provide low passband insertion loss in a compact design.



### TYPICAL SPECIFICATIONS

	ATSC	DVB-T2	ISDB-T
<b>Channel Bandwidth</b>	$F_c \pm 2.69$ MHz	$F_c \pm 3.885$ MHz	$F_c \pm 2.79$ MHz
<b>Insertion Loss</b>	FC 0.40 dB $F_c \pm 2.69$ MHz .75 dB	FC 0.28 dB $F_c \pm 3.885$ MHz .95 dB	FC 0.4 dB $F_c \pm 2.79$ MHz 1.0 dB
<b>VSWR</b>	1.10:1	1.12:1	1.10:1
<b>Rejection</b>	$F_c \pm 3.5$ MHz 8 dB $F_c \pm 4.0$ MHz 30 dB $F_c \pm 9$ MHz 55 dB	$F_c \pm 3.5$ MHz 3 dB $F_c \pm 4.0$ MHz 20 dB $F_c \pm 9$ MHz 35 dB	$F_c \pm 3.15$ MHz 4 dB $F_c \pm 4.5$ MHz 18 dB $F_c \pm 9$ MHz 35 dB
<b>Group Delay</b>	250 nsec	300 nsec	450 nsec
<b>Connectors (#)</b>	1-5/8" (2) 3-1/8" (3)	1-5/8" (2) 3-1/8" (3)	1-5/8" (2) 3-1/8" (3)