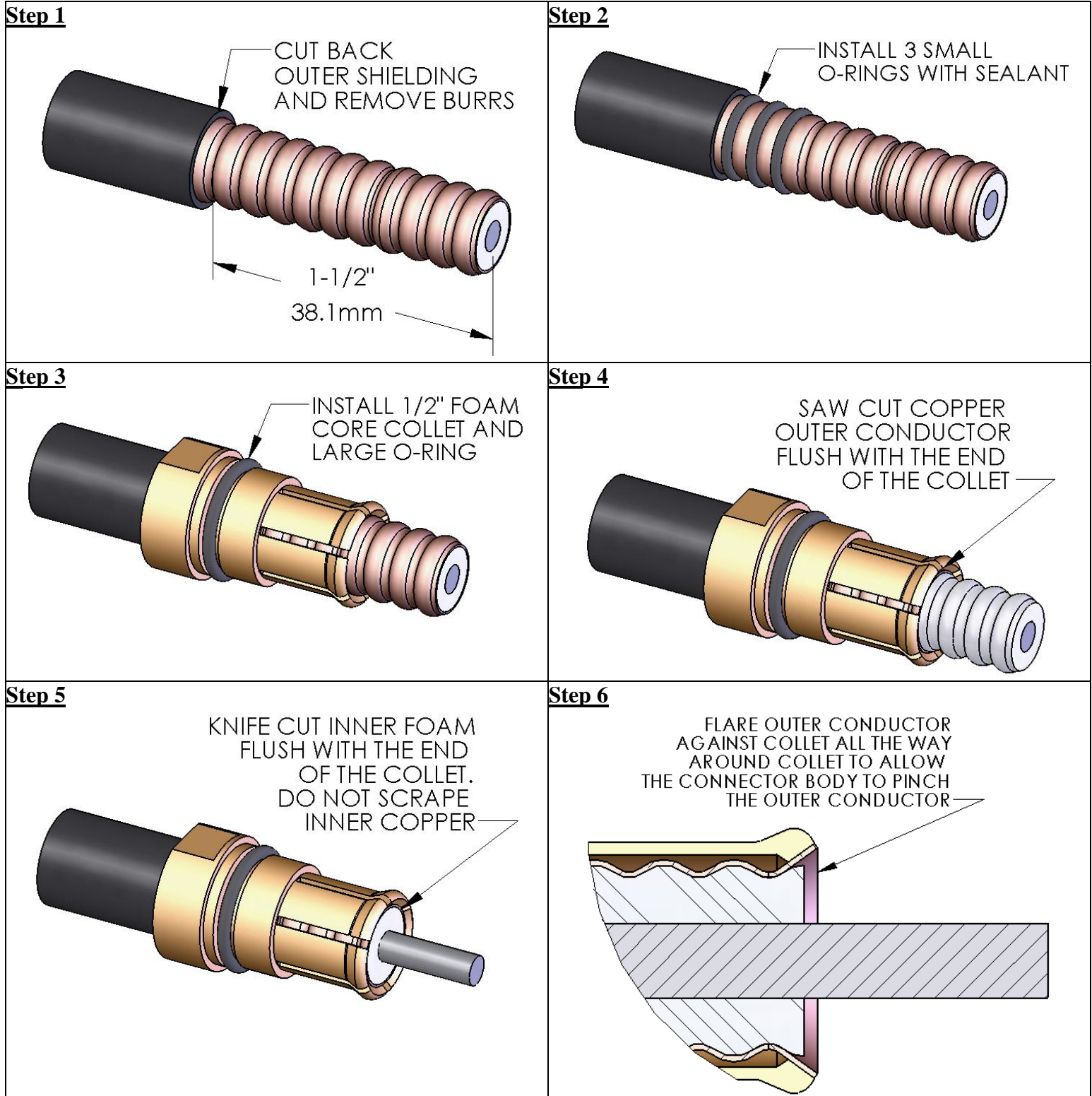




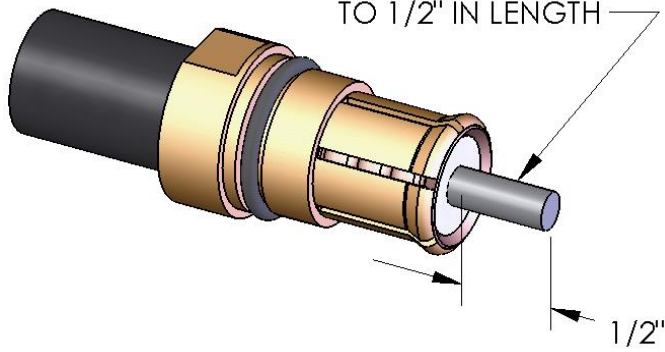
7/8" EIA Connector For 1/2" Foam Cable RCTK-120

Installation instructions for 7/8" EIA swivel flange connector to 1/2" foam cable.



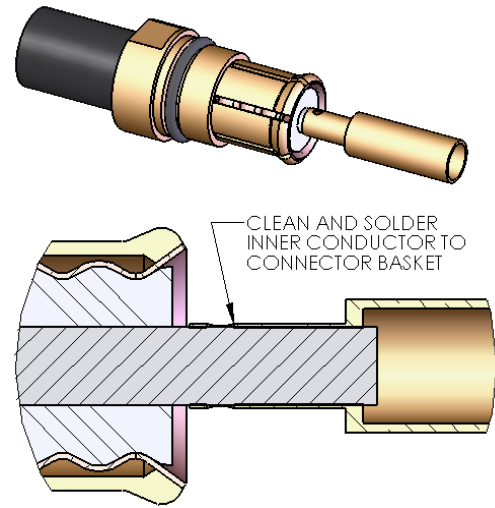
Step 7

SAW CUT, SAND AND FILE
INNER CONDUCTOR
TO 1/2" IN LENGTH



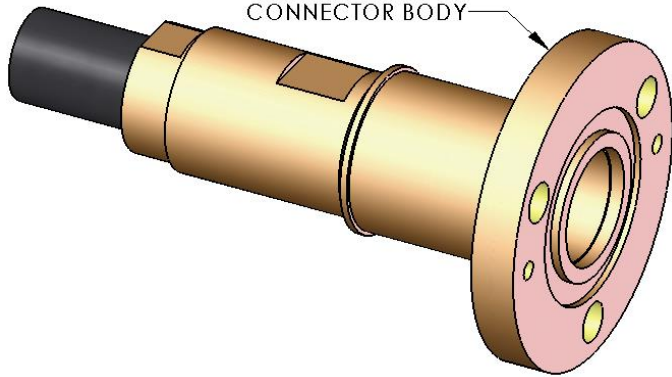
Step 8

CLEAN AND SOLDER
INNER CONDUCTOR TO
CONNECTOR BASKET



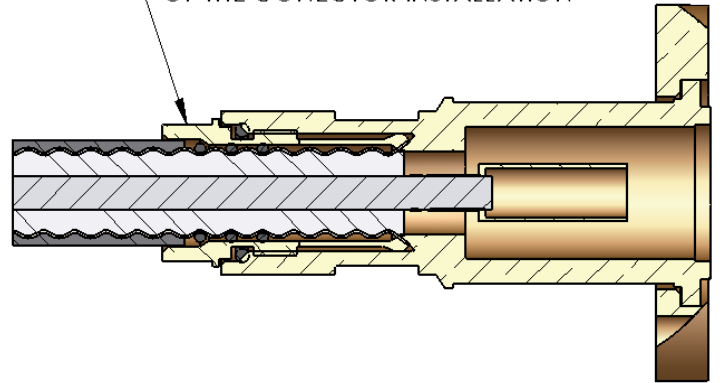
Step 9

ENSURE THAT SWIVEL
FLANGE IS PROPERLY
SECURED BEFORE INSTALLING
CONNECTOR BODY



Step 10

TIGHTEN CONNECTOR BODY ON TO COLLET
BY USING WRENCHES ON THE FLATS ONLY.
DO NOT SPIN THE CABLE DURING COMPLETION
OF THE CONECTOR INSTALLATION



Pressure test cable and connectors to ensure proper installation of connections.
Congratulations, you have completed installation of the 7/8" EIA foam cable connector.