



TV Systems
Product Catalog 2022

(Front Cover Photo) UHF Top-mount Combined Antenna System
Highest Power Antenna in Asia (Jakarta, Indonesia)

First DTV Antenna on the Hancock Building— Chicago, USA





JAMPRO ANTENNAS, INC.– Your Partner for DTV-DVB-T & HD Radio Solutions- the oldest, most experienced broadcast antenna company in North America with over 50 years of experience providing “Complete Turnkey Broadcast Systems.”

ABOUT JAMPRO

Jampro Antennas Inc., established in 1954 to answer the need for high quality broadcast systems with a cost effective solution. Jampro is a leading supplier of antennas, combiners & filters, towers and RF components for every application in the broadcast industry. Reputed for innovation and customization, Jampro builds each system to the specifications of each individual broadcaster. From the first system delivered to those installed today, Jampro is committed to consistent performance and quality founded on solid engineering. Today over 25,000 broadcasters worldwide benefit from the quality and performance provided by Jampro systems.

CONTINUING THE TRADITION

- Engineering and manufacturing broadband multi channel systems for UHF/VHF/FM since 1967 and delivered more than 200 systems in the last 5 years.
- Delivered and installed the highest power broadband UHF systems including antennas, combiners, transmission line, and towers in Asia. One system rated for 320kW and three others operate at 240kW, 260kW, and 280kW.
- Major supplier for common transmission infrastructure projects in India. Supplying more than 75% of equipment for phase 1 and the largest number of sites for phase 2.
- True pioneer in the development and introduction of “Circular Polarization to TV.” Delivering 1st circularly polarized TV Antenna in the world and 1st 5MW circularly polarized UHF system.
- Fully staffed with experienced engineers worldwide to perform field and installation services.
- Jampro Antennas (Canada), Inc. established to better serve the Canadian and International market.
- Jampro acquires iconic European antenna supplier, ADBL (Alan Dick Broadcast Ltd), to cover the needs of broadcasters worldwide. More information about ADBL can be found on their website at www.AlanDickBroadcast.com.
- Regional offices located in Latin America, Asia, USA (California, Mid-West & Texas), Canada, and the United Kingdom.

For more information visit www.JAMPRO.com

TV ANTENNAS

Panel

Ideal for DVB-T/H, ISDB-T, DTV & Analog

- Radomes available for most models.
- Omni & directional patterns available.
 - JADP
 - JAHD
 - JCPD
 - JUHD/JUVD
 - JUCD
 - JUED
 - JHD
 - JVD

TV PANEL ANTENNAS



JADP Cavity Backed

Utilizes a wide-band element to excite a cavity resonator for maximum beam control and axial ratio. The result is an antenna which is far superior to standard flat panel designs.

- Band I & III
- Excellent VSWR & bandwidth without field tuning
- Omni or directional patterns
- Multi or single station use
- Radomes available
- DC ground at each bay



JAHD Arrowhead Dipole

Excellent choice for stations looking for above average pattern stability and excellent control over axial ratio. Designed to be mounted on the sides of a large tower or other large supporting structure.

- Band I & III
- Excellent VSWR & bandwidth without field tuning
- Omni or directional patterns
- Multi or single station use
- DC ground at each bay
- Radomes available



JCPD 4-Dipole Flat Panel

Circularly polarized 4-dipole flat panel antenna system. Rugged galvanized steel construction insures many years of dependable performance in even the harshest environments.

- Band I & III
- Excellent VSWR & bandwidth without field tuning
- Radomes available
- Omni or directional patterns
- DC ground at each bay

TV PANEL ANTENNAS



JUHD (Horizontal) | JUVD (Vertical)

The design of this horizontally polarized antenna (JUHD) may be configured to include varying levels of vertical polarization (JUVD), with results ranging from small amounts of elliptical polarization to full circular polarization.

- Power rating 2.5kW (JUVD) | 2.5kW & 5kW (JUHD) per panel
- JUHD– Horizontal Polarization | JUVD– Vertical Polarization
- VSWR 1.1:1
- 50 ohm impedance
- 470-860 MHz frequency range



JUCD

Broadband circularly polarized UHF Panel Antenna can produce a wide variety of standard and custom azimuth patterns. Through a feed system design which provides excellent performance regardless of a station's channel, pattern variation over the band is minimized.

- 2.3kW per input typical (*Higher power options available)
- Circular polarization
- VSWR 1.15:1
- 50 ohm Impedance
- 470-800 MHz frequency range



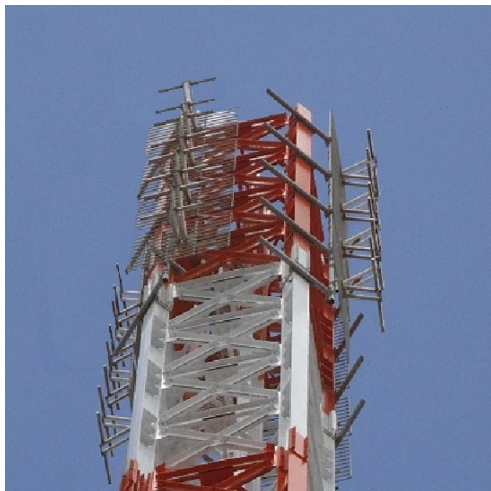
JUED

Based on a modular design and can be configured to provide various azimuth and elevation patterns. By using optional beam tilt and null fill, the elevation pattern can be shaped to maximize coverage.

- 2.3kW per input
- Elliptical polarization
(*Horizontal & Vertical polarization split upon application)
- VSWR 1.15:1
- 50 ohm impedance
- 470-800 MHz frequency range

TV PANEL ANTENNAS

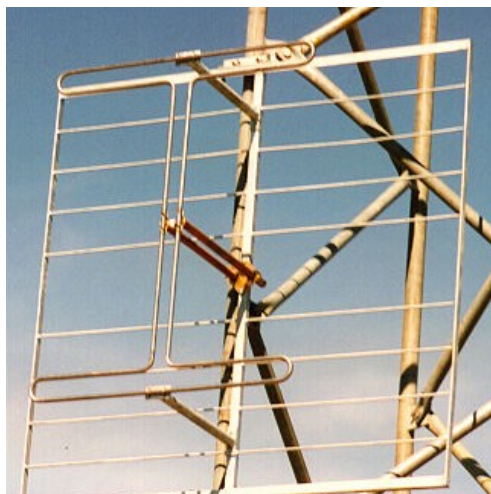
JHD Series



JHD HV2 | HV4

The JHD horizontally polarized Band III dual dipole, half-wave spaced panel antenna has been proven to have excellent bandwidth and VSWR. Protective light-weight radomes available to protect against heavy ice build up.

- Horizontal/Vertical Polarization
- High Band VHF Band III
- VSWR < 1.05:1 typical
- Pressurized Feed System & Dipoles
- Omni and directional patterns



JHD HR2 | HR4

The JHD horizontally polarized Band III dual dipole, half-wave spaced panel antenna has been proven to have excellent bandwidth and VSWR.

- High Band VHF Band III
- VSWR < 1.1:1 typical
- Stainless Steel Dipoles
- Custom Mounting Brackets
- Low weight and windload



JHD LV1 | LV2

The JHD horizontally polarized Band I half-wave spaced dual dipole or single dipole panel antenna has been proven to have excellent bandwidth and VSWR. Protective light-weight radomes available to protect against heavy ice build up.

- Low Band VHF Band I
- VSWR < 1.1:1 typical
- Pressurized feed system & dipoles
- Stainless steel dipoles
- Radomes available

TV PANEL ANTENNAS

JVD Series



JVD

DAB Band III dipole antenna. Proven dependable and excellent bandwidth.

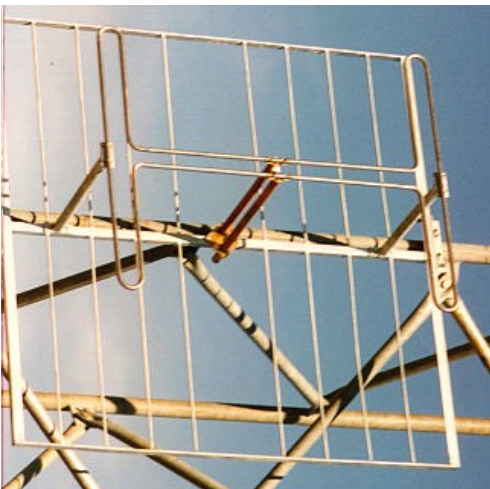
- High Band VHF Band III
- Stainless Steel Dipoles
- Excellent VSWR & bandwidth
- Custom Mounting Brackets Available



JVD HV2 | HV4

The JVD vertically polarized Band III dual dipole, half-wave spaced panel antenna has been proven to have excellent bandwidth and VSWR. Protective light-weight radomes available to protect against heavy ice build up.

- High Band VHF Band III
- VSWR < 1.05:1 typical
- Pressurized Feed System Dipoles
- Stainless Steel Dipoles
- Radomes Available



JVD HR2 | HR4

The JVD vertically polarized Band III dual dipole, half-wave spaced panel antenna has been proven to have excellent bandwidth and VSWR.

- High Band VHF Band III
- VSWR < 1.1:1 typical
- Custom Mounting Brackets
- Stainless Steel Dipoles

TV ANTENNAS

Slot

Ideal for DVB-T/H, ISDB-T, DTV & Analog

- JL-SS
- JA-SS
- JA-LS
- JA-MS
- JSL
- JSM
- JSH
- JA-MS-BB
- JAT-U

TV SLOT ANTENNAS

Super Slot Series



JL-SS

Low power Gap Filler slot antenna produces an omni pattern.

- Power rating 1kW
- VSWR < 1.1:1
- 50 ohm input impedance
- Band IV & V (470—860 MHz)
- Single channel

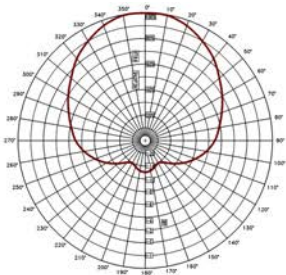


JA-SS

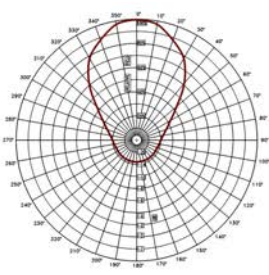
Low power slot antenna designed to be low weight and windload. Designed to minimize cost and delivery time. Offered with five standard azimuth patterns and either an 8, 12 or 16 bay configurations.

- VSWR < 1.1:1
- 50 ohm input impedance
- 470-860 MHz frequency range
- Single or multi-channel broadband
- Elliptical or circular polarization available
- Partial radome for low windloading

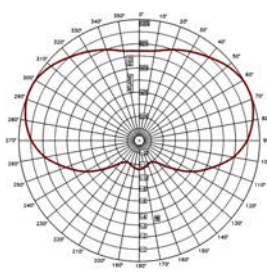
5 Standard Typical Azimuth Patterns



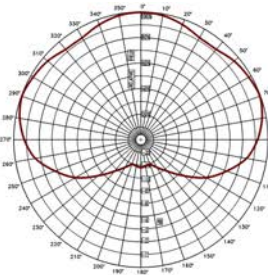
Medium Cardioid



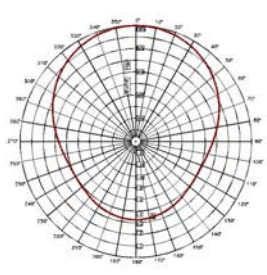
Narrow Lobe



Peanut



Cardioid



Omni/Omnoid

TV SLOT ANTENNAS

Prostar Series



JA-LS

The main stay of the Jampro UHF low power slot antenna line with many years of production and installations.

- 2 kW max power input
- Excellent VSWR and Bandwidth
- Bands IV & V (470-860 MHz)
- 10 standard azimuth & custom patterns available
- Elliptical or circular polarization available
- Partial radome for low windloading



JA-MS Medium Power

The harsh environment version of the JA/LS antenna. The JA/MS antenna is an excellent choice for low to medium power UHF broadcasters.

- Rugged construction for harsh environments
- Elliptical or circular patterns available
- Power varies with number of bays
- Bands IV & V (470-860 MHz)
- 10 standard azimuth & custom patterns available
- Partial radome for low windloading



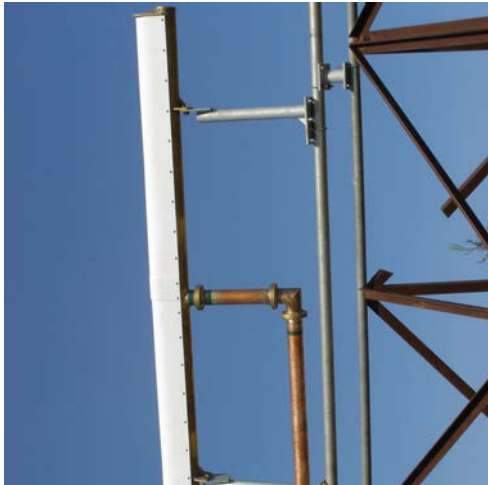
JSL VHF

The JSL-V is the VHF Band III version of the Prostar slot antenna which is designed based on sound engineering practices utilized in the UHF product line.

- VHF Band III (174-230 MHz)
- Excellent VSWR
- Horizontal, elliptical or circular polarizations available
- Standard azimuth & custom patterns available
- Partial radome for low windloading & full radomes available

TV SLOT ANTENNAS

Prostar Series



JSM Medium Power

The UHF Prostar series medium power slot antenna is designed with a rugged and pressurized feed system and available in many azimuth patterns.

- 40 kW max power input
- Excellent VSWR
- 50 or 75 ohm input impedance
- Horizontal, elliptical or circular polarizations available
- Many standard azimuth patterns available
- Partial radome for low windloading & full radomes available



JSH High Power

The UHF Prostar series is the highest power slot antenna manufactured by Jampro. The use of a waveguide power dividing feed system increases the power rating of the antenna.

- 120 kW max power input
- Excellent VSWR
- 50 or 75 ohm input impedance
- Horizontal, elliptical or circular polarizations available
- Many standard azimuth patterns available
- Partial radome for low windloading & full radomes available



JA-MS-BB

The True and Tested Prostar slot antenna available in Broadband for combined Analog & Digital applications. Eliminates the need for multiple antennas and provides a single, compact solution that conserves tower space and minimizes wind loading.

- Low to high power applications
- Broadband typical 60-80 MHz *In excess of 120 MHz available
- Elliptical or circular patterns available
- Rugged construction
- Partial radome for low windloading & full radomes available

TV ANTENNAS

JAT-U UHF Turnstile



ELECTRICAL DATA			
	Number of Bays		
	1	2	4
Antenna Type	JAT-1	JAT-2	JAT-4
Frequency Range	470-860 MHz		
Impedance	50 OHM		
Connector	7/8" EIA or 1-5/8" EIA		1-5/8" EIA
Max Power	2kW or 5kW		5kW*
VSWR	≤ 1.1 (in the frequency range)		
Polarization	Horizontal		
Gain (referred to half wave dipole)	5 dB	8 dB	11 dB
Lightning Protection	All metal parts DC Grounded		

*Higher power rating available- Contact Factory

MECHANICAL DATA			
	Number of Bays		
	1	2	4
Diameter	406 mm		
Antenna Height "L"	5.25 ft / 1.6m	9.85ft / 3.0m	17.72ft / 5.4m
Weight	98lb / 45kg	180lbs / 82 kg	290lbs / 132kg
Wind Surface	7.0 sq/ft	13.15 sq/ft	23.6 sq/ft
Max Wind Velocity	147 mph (220 kph)		
Materials	Fiberglass Cylinder		
Icing Protection	Full Radome		
Radome Color	White		
Mounting	Top Mount/Base Flange Mount/ Side Mount		

The super turnstile has many outstanding features that mean great value to today's broadcaster. Radome enclosed for Long life and many years of continuous service. The JAT-U can be either top or sidemounted on a tower. Minimum windloading while providing broadband response makes the JAT-U an ideal antenna for applications where either the channel is defined or where multiple channels are to be combined.

Band IV/V 470 – 860 MHz

Radome Enclosed

Assembled and Tested

Top or Side Mount



PRODUCTS & SERVICES

Antennas

- UHF
- VHF
- FM

Combiners/Filters

- UHF
- VHF
- FM

Transmission Line

- Rigid Line
- Coaxial cable
- Waveguide

Towers

- Guyed
- Self Support

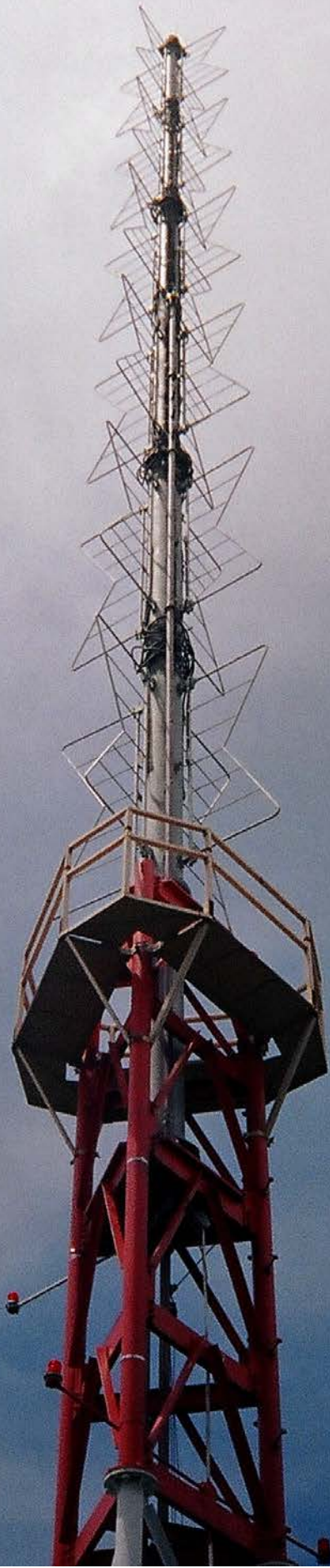
Field Services/Installation

- Turn Key Installations
- Site Survey and Inspection Services
- Transmission Line System Design and Layout
- System Optimization Testing Service
- After Sales Maintenance and Inspection

JAMPRO.com

Features of the VHF Batwing Antenna

- Band I & III
- Designed for exact channel(s)
- Multi channel designs available
- Heavy duty Beryllium Copper fanner straps
- Welded bosses
- Antennas can be shipped completely assembled, ensuring VSWR and pattern circularity conformity
- Pole and batwing elements hot dip galvanized after completion





When You Want More Than Just an Antenna

CONTACT JAMPRO

Main Headquarters: 6340 Sky Creek Drive, Sacramento, California 95828, USA

Telephone: +1 (916) 383-1177 or Toll Free 1 (866) 452-6770

Fax: +1 (916) 383-1182

Email: Jampro@Jampro.com or Jampro.Antennas@gmail.com

Website: www.JAMPRO.com

