

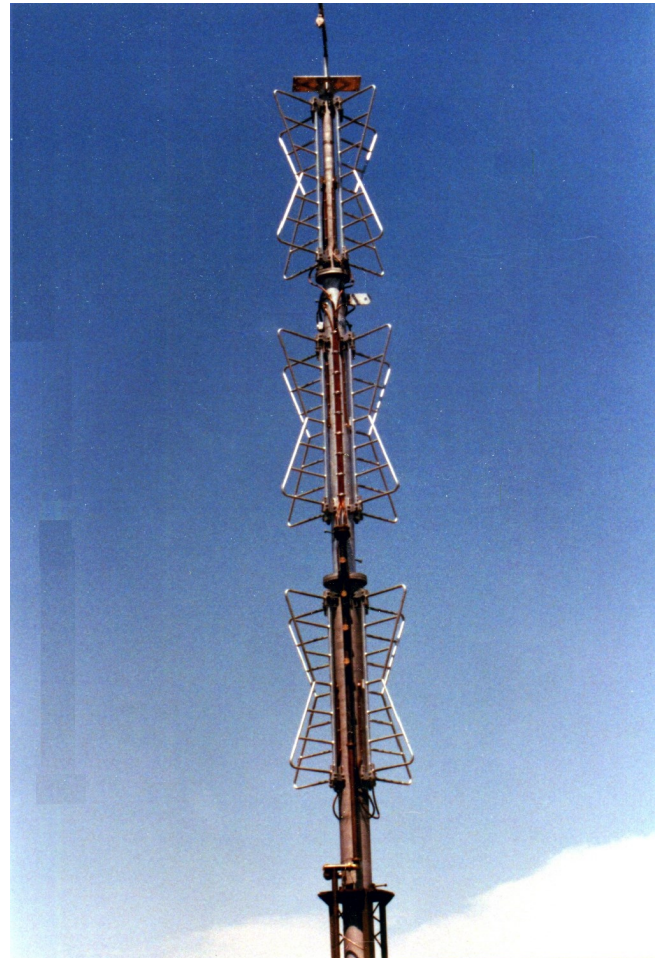


## VHF TV BATWING ANTENNA

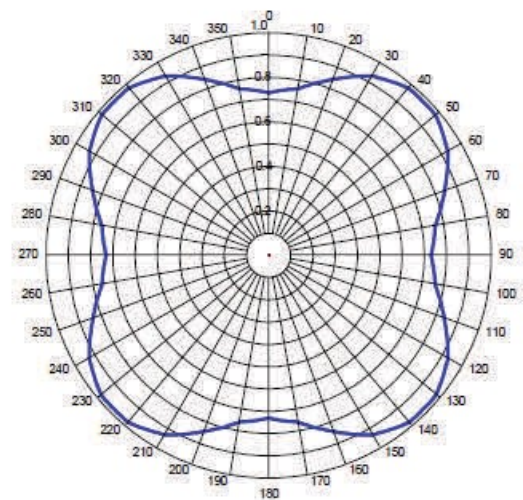
The JAMPRO Batwing has many outstanding features that mean great value to today's broadcaster. The entire structure, pole and batwing, are hot-dipped galvanized before assembly. This is important not only for long life, but also means reliable contact at important current carrying points. High strength beryllium copper with soldered brass terminal material is used for fanner straps. All connections in a JAMPRO Batwing are bolted. No hose clamps in these vital places.

Add complete assembly, tuning and range measurement of your antenna before shipping and you see why there's no question about its performance.

Directional batwings are a custom feature, also batwing reharness kits are available for any antenna from JAMPRO. Call for Details.



- Band I (54-88 MHz) Ch. 2-6**
- Band III (174-230 MHz) Ch. 7-13**
- NTSC & CCIR Channels**
- Hot dipped galvanized steel**
- Semi flexible interbay lines**
- Assembled and rage tested**
- Beam tilt and null fill available**



Standard Omni Azimuth Pattern



## MECHANICAL DATA

50/33 PSF, NO ICE

MODEL	A	B	C	D	H1	H2	H3	E	F	G	H
JAT 2/2-3	27.6	9	3.5	6	38.1	32.1	17.3	8.6	1600	29	2150
JAT 2/4-6	22.7	6.9	2.7	6	32.4	26.4	14.1	7.6	1400	16.5	1650
JAT 2/7-13	9.2	3.2	2.5	6	18.9	12.9	7.1	6.6	700	4	1000
JAT 3/2-3	44.6	9	3.5	8	57.1	49.1	25.8	11.8	2600	54	4600
JAT 3/4-6	36.7	6.9	2.7	8	48.4	40.4	21.1	10.8	1800	33.5	3500
JAT 3/7-13	14.8	3.2	2.5	6	24.3	18.3	9.9	8.6	800	7.8	1500
JAT 4/2-3	61.6	9	3.5	12	78.1	66.1	34.3	16	3700	100	7000
JAT 4/4-6	50.7	6.9	2.7	10	64.4	54.4	28.1	14	2750	69	4750
JAT 4/7-13	20.4	3.2	2.5	8	31.9	23.9	12.7	8.6	900	21	2500
JAT 5/2-3	78.6	9	3.5	16	99.1	83.1	42.8	18	5000	190	10000
JAT 5/4-6	64.7	6.9	2.7	16	84.4	68.4	35.1	14	3700	115	7000
JAT 6/2-3	95.6	9	3.5	20	120.1	100.1	51.3	20	6600	287	14000
JAT 6/4-6	78.7	6.9	2.75	18	82.4	82.4	42.1	18	4700	173	12000
JAT 6/7-13	31.6	3.2	2.5	10	35.1	35.1	18.3	8.6	1600	31	2800
JAT 8/7-13	42.8	3.2	2.5	10	46.3	46.3	23.9	10.8	2200	55	4800
JAT 10/7-13	54	3.2	2.5	10	57.5	57.5	29.5	12.8	3200	94	8500

- |    |  |    |   |
|----|--|----|---|
| A  | Ft. Antenna Aperture                   | H3 | Ft. Center radiation about tower            |
| B  | Ft. Antenna Width                      | E  | Inches Pole Diameter at Tower Top           |
| C  | Ft. Clearance, tower top to batwing    | F  | Lbs. Wind Force at Radiation Center         |
| D  | Ft. Bury length*                       | G  | KIP Ft. Overturn Moment, Tower Top          |
| H1 | Ft. Overall pole length, includes bury | H  | Lbs. Weight of Complete Antenna             |
| H2 | Ft. Pole length above tower top        |    | * No bury section if antenna flange amount. |

Deicers Ch. 2-3 3 kW per bay  
 Ch. 4-6 2 kW per bay  
 Ch. 7-13 .8 kW per bay

Voltage 120 volts to ground

\*\*Special deicer requirements available, contact factory for details